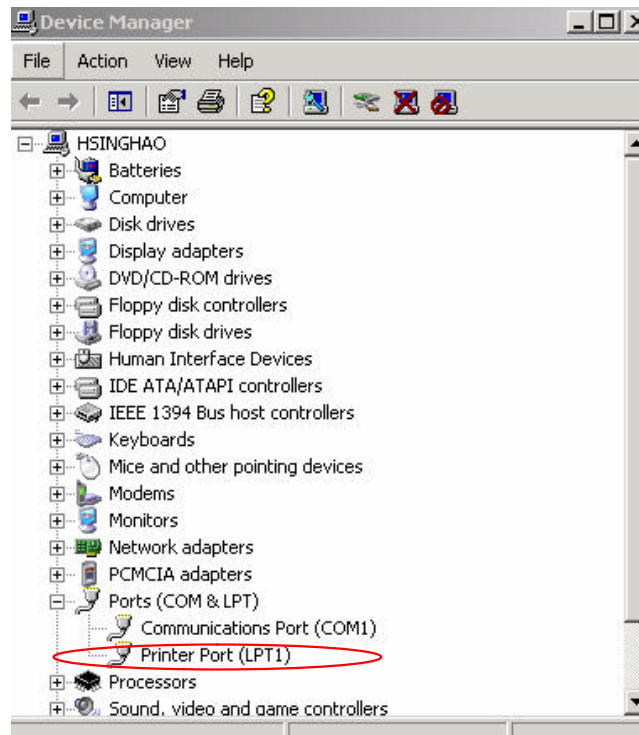
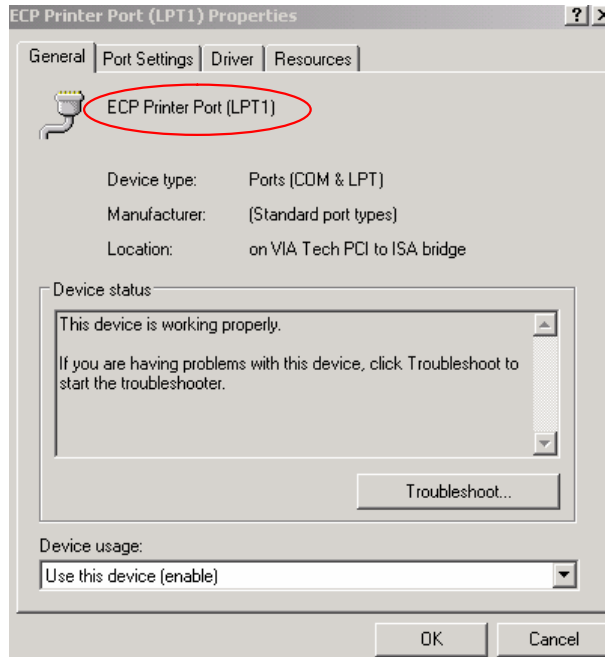


Trouble shooting for connection problem of CIC-500

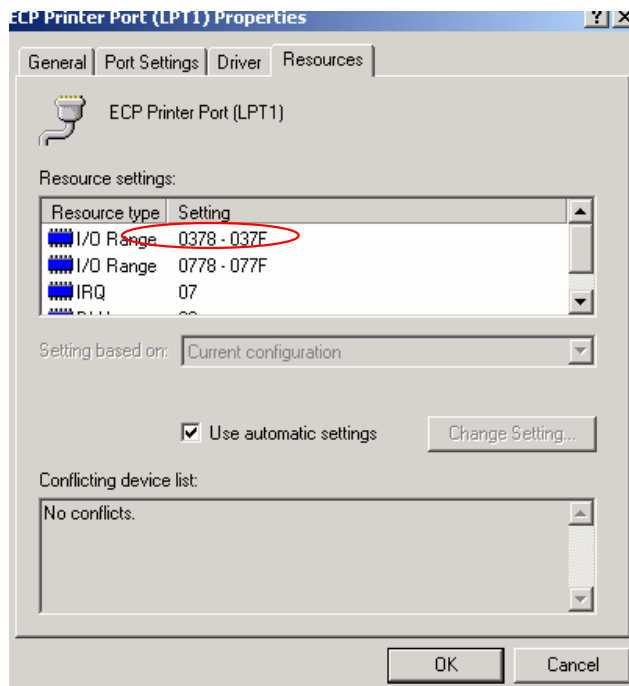
1. The software Code Explorer C54x (free provided by Texas Instrument) only runs under windows 98 system. You need to use Win98 for successfully connecting the equipments and PC. You can purchase the WinXP version, Code Composer Studio, from TI website, around \$4000 us dollar /set.
2. (a) Double click and check the status of your PARALLEL port.



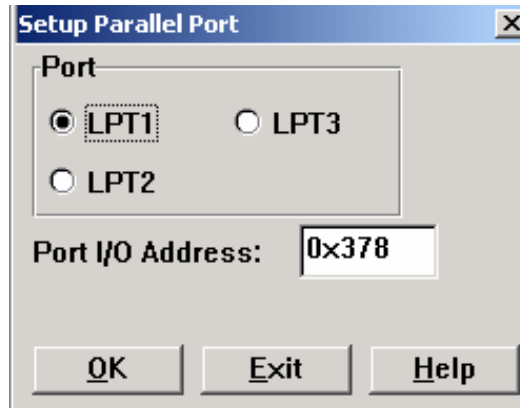
(b) Your parallel port mode should be in EEP, ECP or any Bi-direction mode. (you can change the parallel mode in BIOS).



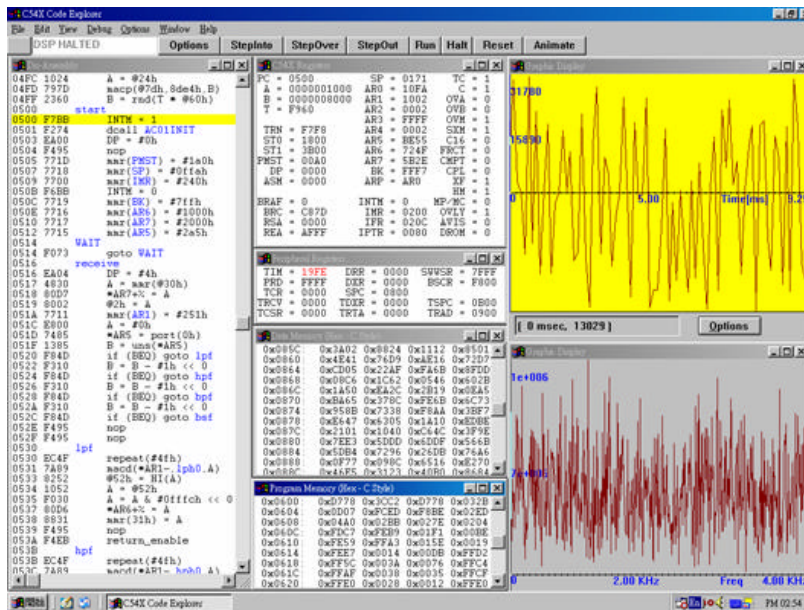
(c) Make a note of your LPT port I/O address (0x378 in the default value)



3. Launching Code Explorer C54x, you will see the “setup parallel port” window. Choose the correct Port and the I/O address than press ok.



5. After pressing OK, you can start to load the program (*.obj).



Note: The voltage level provided by parallel port need to be 5V. Some Laptop provides 3.3V voltage will lead the connection failure.

Note: Cable connection diagram.

